

# ECHO LAKE

APPAREL & ACCESSORIES 2015



THE **CAMPSPOT** SINCE 1959  
OFFICIAL CAMP OUTFITTER

# TONY AND LAURIE'S INTRODUCTION

Dear Camp Family,

We are delighted to introduce you to The Camp Spot - our new official camp outfitter! We are confident that you are going to be very impressed with the quality of their products and their level of customer service. We are also very excited to introduce some new logo designs as well as new clothing items for 2015.

If you have any questions about packing, especially if this is your first time sending a child to camp, please call us at the office any time.

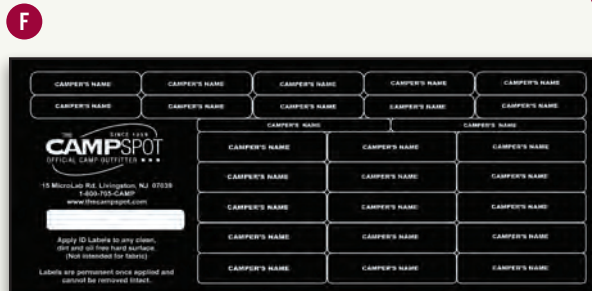
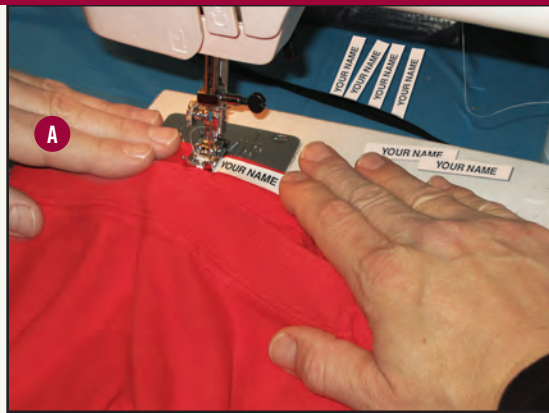
Can't wait to see you at camp!

Tony & Laurie

## MARK YOUR STUFF

### LET US MARK YOUR STUFF

Purchase Name Tapes...  
We Will Sew Them On For FREE!  
*(On all orders over \$100)*



- A Sew-On Name Tapes**

#NTS1	100 Tapes	\$11.99
#NTS2	200 Tapes	\$16.99
- B Iron-On Name Tapes (not shown)**

#NTI1	100 Tapes	\$11.99
#NTI2	200 Tapes	\$16.99
- C Permanent Ink Stamper**

This permanent ink stamper is great for applying names to white or light colored clothing.

#STAMP	One Stamper	\$24.99
#INK	Ink Refill	\$9.99
- D Laundry Marking Pen**

This handy marking pen is perfect for writing names on last minute additions to the camp trunk.

#LMP	One Pen	\$2.99
------	---------	--------
- E Label Daddy® Clothing Stickers**

Each Label Daddy® Camper Pack contains 100 peel and stick washable labels. Includes 3 different size stickers to make it easy to label all of your clothing, shoes, and more. Available in Blue, Green, Pink, and Purple.

#LDS1	100 Stickers	\$34.99
#LDS2	200 Stickers	\$59.99
- F Permanent Equipment Labels**

Don't lose your stuff. These permanent waterproof labels will stick to just about anything. Perfect for water bottles, sports equipment, etc. Each sheet contains 27 stickers, including two for eyeglasses.

#ES1	1 Sheet	\$16.99
#ES2	2 Sheets	\$24.99
#ES3	3 Sheets	\$31.99

# WHAT WILL I NEED FOR CAMP ECHO LAKE?

## LABELING INSIDE FRONT COVER

*All clothing and equipment must be labeled with the camper's full name.*

- \_\_\_ 100-200 Sew-on or Iron-on Name Tapes
- \_\_\_ 1-3 sheets Equipment Stickers

## REQUIRED CAMP UNIFORM PAGE 2

- \_\_\_ 2 Grey Ts with Logo
- \_\_\_ 2 Gold Ts with Logo
- \_\_\_ 2 Green Ts with Logo

## ADDITIONAL APPAREL PAGES 2-7

- \_\_\_ 4 White Ts (Any Style)
- \_\_\_ 10 Additional Ts (Any Style)
- \_\_\_ 2 Sleeveless Tanks / Shirts
- \_\_\_ 2 Sweatshirts
- \_\_\_ 4 Long Pants (Jeans, Khakis, etc.)
- \_\_\_ 7 Shorts
- \_\_\_ 2 Baseball Caps

## OUTERWEAR PAGE 6

- \_\_\_ 1 Lightweight Jacket / Pullover - Vest
- \_\_\_ 1 Heavyweight Jacket
- \_\_\_ 1 Waterproof Rain Jacket or Poncho

## SOCKS & SHOES PAGE 9

- \_\_\_ 18 Pairs of Socks
- \_\_\_ 2 Athletic Sneakers
- \_\_\_ 1 Field Cleats
- \_\_\_ 1 Shower Shoes
- \_\_\_ 1 Rain Boots or Shoes
- \_\_\_ 1 Hiking Boots

## UNDERWEAR & SWIMWEAR PAGE 10-11

- \_\_\_ 15 Pairs of Underwear
- \_\_\_ 5 Swimsuits  
(Girls: 1-Piece Only)

## BUNKWEAR & BATH PAGE 8, 12-13

- \_\_\_ 2 Sets of Warm Sleepwear
- \_\_\_ 2 Sets of Lightweight Sleepwear
- \_\_\_ 1 Shower Caddy
- \_\_\_ 1 Terry Bathrobe
- \_\_\_ 7 Bath / Beach Towels
- \_\_\_ 2 Washcloths

## BEDDING & LAUNDRY PAGE 14-15

- \_\_\_ 1 Comforter / Blanket
- \_\_\_ 2 Twin Size Sheets Sets
- \_\_\_ 1 Pillow
- \_\_\_ 1 Laundry Bag with Name

## CAMPING & OUTDOORS PAGE 16

- \_\_\_ 1 Sleeping Bag
- \_\_\_ 1 Deet Free Insect Repellent
- \_\_\_ 1 Crazy Creek Chair (Optional)

## BAGS PAGE 17

- \_\_\_ 2 Soft Trunks with Name
- \_\_\_ 1 Backpack/Bookbag (REQUIRED)
- \_\_\_ 1 Set of Luggage Tags

## EQUIPMENT PAGE 18

- \_\_\_ 1 Pair of Shin Guards
- \_\_\_ 1 Tennis Racquet
- \_\_\_ 1 Baseball Glove
- \_\_\_ 1 Rollerblades (Optional)
- \_\_\_ 1 Helmet with face shield (Required for Roller Hockey)
- \_\_\_ 1 Knee/Shin Guard Unit (Required for Roller Hockey)
- \_\_\_ 1 Elbow Pads (Required for Blading/Roller Hockey)
- \_\_\_ 1 Hockey Gloves (Required for Roller Hockey)
- \_\_\_ 1 Mesh Sport Bag with Name for Equipment (Required for Roller Hockey Equipment)

**Roller Hockey is offered strictly as an elective at camp. Roller Hockey equipment is not needed to participate in hockey group activities.**

## ESSENTIALS & FUN STUFF PAGES 19-21

- \_\_\_ 1 Flashlight with Extra Batteries
- \_\_\_ 2 Water Bottles
- \_\_\_ 1 Battery Operated Fan
- \_\_\_ 4 Sets Stationery and Stamps
- \_\_\_ 2 Disposable Cameras  
(Or Inexpensive Camera)
- \_\_\_ Books and Non-Electronic Games

## SUGGESTED PERSONAL ITEMS

- \_\_\_ Toothbrushes and Toothpaste
- \_\_\_ Hair Brush
- \_\_\_ Soap
- \_\_\_ Shampoo/Conditioner
- \_\_\_ Sunscreen
- \_\_\_ Pair of Extra Eyeglasses



**A T-Shirt (REQUIRED)**

These heavyweight T's are full cut and made from 100% cotton. Available in Gold, Green, and Grey.

#12 Youth Sizes: S-M-L \$17.99  
#12 Adult Sizes: S-M-L-XL \$17.99

**B American Apparel® V-Neck Tee**

Made from 100% fine jersey cotton with a rib v-neck. Available in White.

#12VA Youth Sizes: 8-10-12 (White only) \$18.99  
#12VA Adult Sizes: XS-S-M-L-XL \$18.99

**C Girls Fitted T-Shirt**

Made from 100% fine jersey, these longer length T's are designed just for girls. Runs small, consider sizing up one size. Available in White.

#12F Youth Sizes: S-M-L \$17.99  
#12F Adult Sizes: S-M-L-XL \$17.99

**D American Apparel® Ribbed Tank Top**

The perfect tank. 100% ringspun cotton with textured 2 x 1 ribbing. Runs small. Available in White.

#12FT Youth Sizes: 8-10-12 \$18.99  
#12FT Adult Sizes: S-M-L-XL \$18.99

**E Soffe® Short**

Always our most popular girls short. Made from 50/50 cotton/poly. These shorts are cut extra short and feature notched sides. Available in Green.

#SOFFL Youth Sizes: S-M-L-XL \$15.99  
#SOFFL Adult Sizes: S-M-L-XL \$15.99

**F Running Short**

Moisture wicking short with breathable mesh side panel. Comfortable fit with built in cotton liner and adjustable tie cord. Runs big, consider sizing down. Available in Green.

#17 Youth Sizes: S-M-L \$23.99  
#17 Adult Sizes: S-M-L-XL \$23.99

**G Girls Mesh Short**

Cut just like your favorite Soffe® shorts, these mesh shorts feature an elastic waistband (for rolling down) and curved sides for style. Made from 100% lightweight polyester mesh. Available in Green.

#15SS Youth Sizes: S-M-L \$22.99  
#15SS Adult Sizes: S-M-L-XL \$22.99

**H Girls Performer Short**

This girls athletic short is made from 100% moisture wicking polyester and features white piping and v-notched sides for style. Available in Green.

#61W Youth Sizes: S-M-L \$22.99  
#61W Adult Sizes: S-M-L-XL \$22.99



Order Online: [www.thecampspot.com](http://www.thecampspot.com)

FREE Name Taping - Inside Front Cover

**I Under Armour® T**  
 This shortsleeve t-shirt uses UA Tech® fabric to provide cool, dry performance and comfort. 100% Polyester. Available in White and Green.  
 #12TT Youth Sizes: S-M-L \$25.99  
 #12TT Adult Sizes: S-M-L-XL \$25.99

**J Long Sleeve T-Shirt**  
 The long sleeve T's are made from 100% cotton, just like the short sleeve version. Available in White and Green.  
 #24 Youth Sizes: S-M-L \$19.99  
 #24 Adult Sizes: S-M-L-XL \$19.99

**K MVP Short**  
 This long basketball short is made from an ultra soft, lightweight performance polyester and features white side stripes, a flat back mesh back panel, and an inside drawstring. Available in Green.  
 #66 Youth Sizes: S-M-L \$25.99  
 #66 Adult Sizes: S-M-L-XL \$25.99

**L Boys Performer Short**  
 This moisture wicking performance short is made from a polyester/spandex stretch fabric. Features wicking mesh inserts, side pockets, and an inside drawstring. Available in Green.  
 #61 Youth Sizes: S-M-L \$25.99  
 #61 Adult Sizes: S-M-L-XL \$25.99

**M Boys Mesh Short**  
 This mesh athletic short is cut long and full and features side pockets and a drawstring waistband. Available in Green.  
 #15P Youth Sizes: S-M-L \$23.99  
 #15P Adult Sizes: S-M-L-XL \$23.99

**N Game Day Short**  
 This moisture wicking short is made from 100% performance polyester fabric. Features white contrasting mesh inserts, side pockets and an inside drawstring. Available in Green.  
 #65 Youth Sizes: S-M-L \$25.99  
 #65 Adult Sizes: S-M-L-XL \$25.99



Order by Phone: 973-994-7416

Meet Us In Person - Back Cover

**A Soccer Jersey**

This stylish moisture wicking soccer jersey is made from 100% performance polyester and features raglan sleeves, contrast side and under sleeve inserts and a crossover neck. Available in Green.

#121 Youth Sizes: S-M-L \$26.99

#121 Adult Sizes: S-M-L-XL \$26.99

**B Basketball Jersey**

This basketball jersey is made from an ultra soft, lightweight performance polyester and features a v-neck collar, white side stripes and flat back mesh back for a pro look. Available in Green.

#89TL Youth Sizes: S-M-L \$26.99

#89TL Adult Sizes: S-M-L-XL \$26.99

**C Shooter Shirt**

This sleeveless athletic T is perfect for any sport. Available in Grey.

#28 Youth Sizes: S-M-L \$18.99

#28 Adult Sizes: S-M-L-XL \$18.99

**D LAX Pinnie**

This reversible tank is made from 100% polyester mesh and features a traditional lacrosse fit with wide body and deep armholes. Available in Green/White..

#14L Youth Sizes: S/M - L/XL \$24.99

#14L Adult Sizes: S/M - L/XL \$24.99

**E Baseball Hat**

This low profile, 6-panel adjustable hat features an embroidered logo. Available in Green.

#22 One Size \$16.99

**F Drawstring Backpack**

Nylon drawstring backpack. Available in Green.

#DSBPL One Size \$11.99



**A Performance Hoodie**  
 This stylish hoodie is made from 100% polyester moisture wicking fleece and features contrasting inserts on the body and sleeves. Available in Green.  
 #20W Youth Sizes: S-M-L \$47.99  
 #20W Adult Sizes: S-M-L-XL \$47.99



**B Track Pant**  
 These athletic pants are made from 100% brushed polyester and feature side pockets, a mesh side panel with piping for style, and zippered leg openings. Runs big. Available in Green.  
 #19TP Youth Sizes: XS-S-M-L \$34.99  
 #19TP Adult Sizes: S-M-L-XL \$34.99

**C Girls Heathered Hoodie**  
 This ultrasoft and stylish girls cut pullover hoodie features a v-notch neck, side gussets and a vintage appliqué. Available in Green.  
 #20HH Junior Sizes: S-M-L-XL \$44.99

**D Leggings**  
 Cotton spandex leggings provide flexible movement and comfort. Available in Grey.  
 #34LL Youth Sizes: S-M-L \$24.99  
 #34LL Adult Sizes: S-M-L-XL \$24.99

**Traditional Sweats**  
 Our traditional camp sweats are made from 50/50 cotton/poly fleece. Available in Green.

**E Hooded**  
 #20 Youth Sizes: S-M-L \$31.99  
 #20 Adult Sizes: S-M-L-XL \$31.99

**F Crewneck**  
 #18 Youth Sizes: S-M-L \$25.99  
 #18 Adult Sizes: S-M-L-XL \$25.99

**G Zip Hood**  
 #20Z Youth Sizes: S-M-L \$39.99  
 #20Z Adult Sizes: S-M-L-XL \$39.99

**H Traditional Sweatpants**  
 These traditional sweatpants feature an elastic waistband, a drawstring cord and elastic bottoms. Available in Green.  
 #19 Youth Sizes: S-M-L-XL \$26.99  
 #19 Adult Sizes: S-M-L-XL \$26.99

**I Open Bottom Sweatpants**  
 Open bottoms and an elastic waist add style to these sweatpants. Available in Green.  
 #190 Youth Sizes: S-M-L-XL \$28.99  
 #190 Adult Sizes: S-M-L-XL \$28.99



Order by Phone: 973-994-7416

Meet Us In Person - Back Cover



A

**A Charles River® Camp Jacket**

The perfect camp jacket. This all-weather water-repellent jacket features a grey sweatshirt lining, a drawstring hood and an embroidered logo on the left chest. Available in Green with logo. Available without logo in Navy, Black, Royal and Green. Add \$7 for Name.

#29E Youth Sizes: S-M-L-XL \$55.99

#29E Adult Sizes: S-M-L-XL \$55.99

#29 Without Logo \$49.99



B



C

**B Charles River® Classic Raincoat**

The perfect raincoat. Waterproof with a hood and two zipper side pockets. Runs big. Available in Navy and Hot Pink. Hot Pink Adult sizes are Ladies cut.

#RC Youth Sizes: S-M-L-XL \$39.99

#RC Adult Sizes: S-M-L-XL \$39.99

**C Red Ledge® Rain Jacket**

This lightweight, waterproof, hooded rain jacket keeps the water out so you can keep going. Zip-front jacket fits neatly into its own pocket. Available in Green with logo. Available without logo in Blue, Green, and Black (Not Shown).

#RJKTE Youth Sizes: S-M-L-XL \$55.99

#RJKTE Adult Sizes: S-M-L-XL \$55.99

#RJKT Without Logo \$49.99

**D Charles River® Polar Fleece Pullover**

This jacket is made from ultra soft anti-pill fleece and features a quarter zipper, a drawstring waist and zipper side pockets. Runs big, consider sizing down. Available in Green with Logo. Available without logo in Navy, Black, Green, and Royal.

#88E Youth Sizes: S-M-L-XL \$47.99

#88E Adult Sizes: S-M-L-XL \$47.99

#88 Without Logo \$41.99



D



Order Online: [www.thecampspot.com](http://www.thecampspot.com)

FREE Name Taping - Inside Front Cover



## GIRLS SHORTS

### A Soffe® Short

Our most popular short. Made from 50/50 cotton/poly. Solids available in Gold, Hunter Green, Navy, Oxford Grey, Black, White, Orange, Purple, Red, and Royal.

#SOFF Youth Sizes: S-M-L-XL **\$8.99**  
 #SOFF Adult Sizes: S-M-L-XL **\$8.99**

### B Girls Mesh Short

Cut just like your favorite Soffe® shorts, these mesh shorts feature an elastic waistband (for rolling down) and curved sides for style. Made from 100% lightweight polyester mesh. Available in Navy, Gold, Black, Green, Purple, and Royal.

#15SSNL Youth Sizes: S-M-L **\$19.99**  
 #15SSNL Adult Sizes: S-M-L-XL **\$19.99**

### C Girls Performer Short

This girls athletic short is made from 100% moisture wicking polyester and features white piping and v-notched sides for style. Available in Green, White, and Navy.

#61WNL Youth Sizes: S-M-L **\$19.99**  
 #61WNL Adult Sizes: S-M-L-XL **\$19.99**

### D Running Short

Moisture wicking short with breathable mesh side panel. Comfortable fit with built in cotton liner and adjustable tie cord. Runs big, consider sizing down. Available in Purple, Royal with Grey, Navy, Green, White, Black with Orange, and Red.

#17NL Youth Sizes: S-M-L **\$21.99**  
 #17NL Adult Sizes: S-M-L-XL **\$21.99**



## BOYS SHORTS

### E Game Day Short

This moisture wicking short is made from 100% performance polyester fabric. Features white contrasting mesh inserts, side pockets and an inside drawstring. Available in Black, Maroon, Royal, Navy, Green, and Red.

#65NL Youth Sizes: S-M-L **\$23.99**  
 #65NL Adult Sizes: S-M-L-XL **\$23.99**

### F Boys Mesh Short

This mesh athletic short is cut long and full and features side pockets and a drawstring waistband. Available in Navy, Grey, Maroon, Black, White, Red, Royal, Gold, and Green.

#15PNL Youth Sizes: S-M-L **\$21.99**  
 #15PNL Adult Sizes: S-M-L-XL **\$21.99**

### G Boys Performer Short

This ultra lightweight moisture wicking performance short is made from a polyester/spandex stretch fabric. Features white wicking mesh inserts, side pockets, and an inside drawstring. Available in Maroon, Black, Green, and Navy.

#61NL Youth Sizes: S-M-L **\$23.99**  
 #61NL Adult Sizes: S-M-L-XL **\$23.99**

### H MVP Short

This long basketball short is made from an ultra soft, lightweight performance polyester and features white side stripes, and an inside drawstring. Available in Red, Black, Green, Maroon, and Navy.

#66NL Youth Sizes: S-M-L **\$23.99**  
 #66NL Adult Sizes: S-M-L-XL **\$23.99**

Order by Phone: 973.994.7416

Meet Us In Person - Back Cover



**A Tie-Dye Hooded Bath Robe**  
 Heavyweight hooded 100% cotton looped terry velour. Available in Turquoise Tie Dye.  
**#ROBET** Youth Sizes: M-L **\$65.99**  
**#ROBET** Adult Sizes: S-M **\$65.99**  
**#ROBETP** With Monogram **\$72.99**

**B Hooded Bath Robe**  
 Heavyweight hooded 100% cotton looped terry velour. Available in Navy, Pink, and White.  
**#ROBE** Youth Sizes: M-L **\$49.99**  
**#ROBE** Adult Sizes: S-M **\$49.99**  
**#ROBEP** With Monogram **\$56.99**

**C Adidas® Water Slide**  
 Lightweight, comfortable and perfect for the shower and waterfront. Girls over size 4, please size down one size. Sizes 1-6 come with a White footbed.  
**#80SW** Youth Sizes: 12 to 6 White/Black **\$34.99**  
**#80SW** Adult Sizes: 7 to 11 Black/White **\$34.99**

**D Bath/Beach Towels**  
 100% soft cotton, very absorbent and the perfect size for bath and waterfront. Available in Navy, White, and Denim.  
**#TOWB** Bath Towel - 27" x 52" **\$11.99**  
**#TOWBP** With Monogram **\$19.99**  
**#TOWW** Wash Cloth (White) - 12" x 12" **\$1.99**



**E Tie Dye Beach Towels**  
 100% cotton velour with vibrant swirls of color. Available in Pink, Navy, and Purple.  
**#TOWTD** Size: 30" x 60" **\$24.99**  
**#TOWTDP** With Monogram **\$32.99**

**F Mesh Shower Tote**  
 This rubberized mesh tote is the ideal size for all your shower needs. It features a spacious center compartment, six side pockets, mesh bottom for drainage, and a carry handle. Available in Hot Pink and Navy.  
**#95MT** 8" x 6" x 8" **\$16.99**  
**#95MTP** With Monogram **\$23.99**

**G Deluxe Pop-Up Mesh Tote**  
 This round mesh shower caddy dries quickly and features 3 center compartments. Perfect for taking your shampoo and soap into the shower. Available in Green, Blue, Black, and Purple.  
**#95POP** 8" x 6" **\$7.99**



BACK



FRONT



**H Dopp Kit**  
 100% polyester dopp kit features a U-Zip opening and front zipper pocket. Includes 5 piece Filler Kit. Available in Black. Filler Kit also sold separately.  
**#DK** 10" x 6.25" x 6.5" **\$19.99**  
**#DKP** With Monogram **\$26.99**  
**#FK** Filler Kit only **\$6.99**

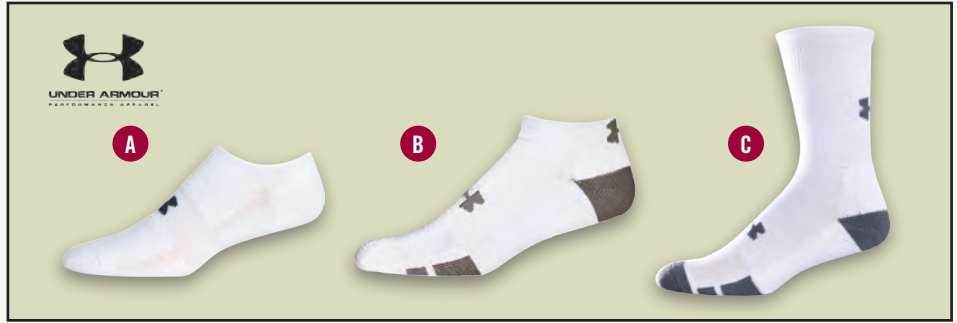


SOCKS

**Under Armour® Socks**

High performance moisture wicking sock. 97% Polyester / 2% Nylon / 1% Lycra.

- A No Show Socks**  
#46UNS Under Armour® Sizes: S-M-L \$4.49
- B Quarter Crew Socks**  
#46UQ Under Armour® Sizes: S-M-L \$3.99
- C Crew Socks**  
#46UC Under Armour® Sizes: S-M-L \$3.99



**Wigwam® Socks**

Soft comfortable socks. 80/20 cotton/spandex.

- D No Show Socks**  
#46NS Wigwam® Sizes: S-M-L \$2.99
- E Low Low Socks**  
#46LL Wigwam® Sizes: S-M-L \$2.99
- F Quarter Crew Socks**  
#46Q Wigwam® Sizes: S-M-L \$2.99
- G Full Crew Socks**  
#46C Wigwam® Sizes: S-M-L \$2.99



- H Echo Lake Tube Socks**  
Custom tube socks. Made from 80% acrylic, 20% stretch yarn.. Available in White.  
#SOXL Youth: Up to Shoe Size 5 \$14.99  
#SOXL Adult: Shoe Size 5 and Up \$14.99
- I Merino Wool Socks**  
These Merino hiking socks have a full cushioned sole and seamless toe closure.  
#46W Sizes: S-M-L \$12.99

Sizing Chart

ALL WIGWAM® & UNDER ARMOUR® NO SHOW		UNDER ARMOUR® QUARTER CREW	
Boys/Mens Shoe Size	Sock Size	Boys/Mens Shoe Size	Sock Size
12-4	S	12-4	S
4-8	M	4-8½	M
8-13	L	9-13	L

SHOES

- J Adidas® Cleats**  
Adidas® all purpose cleat. Great for soccer and baseball. Girls over size 4, please size down one size.  
#80FCY Youth Sizes: 1 to 6 \$35.99
- K Adidas® Water Slide**  
Lightweight, comfortable and perfect for the shower and waterfront. Girls over size 4, please size down one size. Sizes 1-6 come with a White footbed.  
#80SW Youth Sizes: 12 to 6 White/Black \$34.99  
#80SW Adult Sizes: 7 to 11 Black/White \$34.99



Order by Phone: 973.994.7416

Meet Us In Person - Back Cover

THE **CAMPSPOT** SINCE 1959  
OFFICIAL CAMP OUTFITTER



Boy's Boxer/Boxer Brief Underwear Sizing Chart		
	Size	Waist
Youth Small	6-8	21-23"
Youth Medium	10-12	23-26"
Youth Large	14-16	26-28"
Youth Xtra Large	18-20	28-30"
Adult Small	AS	28-30"
Adult Medium	AM	32-34"
Adult Large	AL	36-38"
Adult Xtra Large	AXL	40-42"

## BOYS/MENS

### UNDERWEAR

- A Hanes® Boxers**  
Poly/Cotton blend. Available in Assorted Plaids.  
#BOXY Boys Sizes: S-M-L-XL \$4.99  
#BOXA Mens Sizes: S-M-L-XL \$5.99
- B Hanes® Boxer Briefs**  
Poly/Cotton blend. Boxer briefs available in Assorted Colors.  
#BBY Boys Sizes: S-M-L-XL \$4.49  
#BBA Mens Sizes: S-M-L-XL \$5.99

### SWIMWEAR

- C Speedo® Swim Goggles**  
Swim goggles with an adjustable double head strap, polycarbonate and anti-fog lenses, and UV protection.  
#SG Sizes: Youth and Adult \$15.99
- D UV Shirt**  
Protect yourself from the sun in this nylon/spandex rashguard tee. Available in White/Navy, and White/Black. SPF 50. Runs small, consider sizing up at least one size.  
#UVS Youth Sizes: L/10 - XL/12 \$29.99  
#UVS Adult Sizes: S-M-L-XL \$29.99

- E Boys Swimsuit**  
100% polyester brushed microfiber with outside drawstring, side pockets, and mesh lining. Available in Black, Green, and Navy.  
#29SS Youth Sizes: S-M-L \$19.99  
#29SS Adult Sizes: S-M-L-XL \$19.99



## LET US MARK YOUR STUFF

**Purchase Name Tapes...  
We Will Sew Them On For FREE!**

*(On all orders over \$100)*



### Identify Your Stuff

With sew-on (or iron-on) name tapes your camp stuff can be easily identified.

### Sew-On Name Tapes

- #NTS1 100 Tapes \$11.99
- #NTS2 200 Tapes \$16.99

### Iron-On Name Tapes

- #NTI1 100 Tapes \$11.99
- #NTI2 200 Tapes \$16.99



Order Online: [www.thecampspot.com](http://www.thecampspot.com)

FREE Name Taping - Inside Front Cover

## GIRLS/WOMENS

### UNDERWEAR

- A Hanes® Bikini**  
100% Cotton. Available in assorted 3-pack.  
#BIKH Girl's Sizes: 6-8-10-12-14 **3 for \$7.99**
- B Calvin Klein® Girls Bikini (While Supplies Last)**  
100% Cotton. Available in assorted 3-pack.  
#BIKC Sizes: 7/8, 10/12 **3 for \$5.99**

- C Malibu Sugar Girls Sports Bra**  
This super soft and super comfortable seam-less sports bra features an x-back. Available in White.  
#SBRAMS Tween (ages 7-11) **\$20.99**  
#SBRAMS Teen (ages 12+) **\$20.99**

### GYMNASTICS WEAR

- D GK® Sleeveless Leotard**  
Classic 100% nylon spandex leotard. Available in Navy and Black. Runs small, consider sizing up at least one size.  
#30NL Youth Sizes: S-M-L **\$28.99**  
#30NL Adult Sizes: S-M-L-XL **\$28.99**

### SWIMWEAR

- E TYR® Patterned Swimsuit**  
Maxback construction, 80% nylon and 20% lycra. Fully lined. Available in Purple and Blue.  
#28TP Youth Sizes: 26-28-30 **\$69.99**  
#28TP Adult Sizes: 32-34-36-38-40 **\$69.99**  
#28TS Green Splice **\$69.99**
- F TYR® Solid Swimsuit**  
Maxback construction, 80% nylon and 20% lycra. Fully lined. Available in Green, Royal, Purple, Navy, and Red.  
#28T Youth Sizes: 26-28-30 **\$59.99**  
#28T Adult Sizes: 32-34-36-38-40 **\$59.99**
- G TYR® Swim Cap**  
Wrinkle-free design for better fit. Available in White and Navy.  
#28SC One Size **\$11.99**



Female Swimsuit Sizing Chart			
Equivalent	Size	Equivalent	Size
Child 7	24	Adult S	34
Child 8	26	Adult M	36
Child 10	28	Adult L	38
Child 12	30	Adult XL	40
Adult XS	32	Adult XXL	42



Order by Phone: 973.994.7416

Meet Us In Person - Back Cover

THE CAMP SPOT  
SINCE 1959  
OFFICIAL CAMP OUTFITTER



TOPS

PICK A TOP...PICK A BOTTOM  
MAKE A SET!

**A Ultra Soft Heathered T**  
This super comfy T-shirt is made from an ultra soft blend of cotton, poly and rayon and features a feminine longer length cut. Runs narrow. Available in Hot Pink, Purple, Aqua, and Grey.  
#12PENL Junior Sizes: S-M-L-XL \$14.99

**B American Apparel® Mini Waffle Long Sleeve Tee**  
Classic unisex mini thermal, updated slim fit. 55% cotton, 45% Polyester. Available in Light Blue, White, Pink, and Grey.  
#LSWT Youth Sizes: 8-10-12 \$19.99  
#LSWT Adult Sizes: S-M-L-XL \$19.99

**C American Apparel® Ribbed Tank**  
The perfect tank. 100% ringspun cotton with textured 2 x 1 ribbing. Available in Black, Grey, Red, Light Blue, Navy, White, and Light Pink.  
#GRIB Youth Sizes: 8-10-12 \$15.99  
#GRIB Adult Sizes: S-M-L-XL \$15.99

**D Long Sleeve T-Shirt (opposite page)**  
The long sleeve T's are made from 100% cotton, just like the short sleeve version. Available in White, Grey, Navy, and Green.  
#24NL Youth Sizes: S-M-L \$11.99  
#24NL Adult Sizes: S-M-L-XL \$11.99

**E Traditional T-Shirt (opposite page)**  
100% cotton short sleeve T. Available in White, Navy, Red, Green, Black, Grey, Royal, Light Blue, and Gold.  
#12NL Youth Sizes: S-M-L \$9.99  
#12NL Adult Sizes: S-M-L-XL \$9.99



Order Online: [www.thecampspot.com](http://www.thecampspot.com)

FREE Name Taping - Inside Front Cover



**BOTTOMS**

**F Fuzzy Shorts (opposite page)**  
 Our super soft fuzzy shorts are made from 100% polyester and feature a low rise. Available in Orange, Green, Navy, Light Blue, and Purple.  
 #PJZS Youth Sizes: S-M-L \$20.99  
 #PJZS Adult Sizes: S-M-L-XL \$20.99

**G Girls Cotton Shorts**  
 These lightweight cotton shorts feature a low rise and outside drawcord waistband. Available in Whales, Purple Peace, Dogs, and Pink Moose.  
 #PJS Youth Sizes: S-M-L \$18.99  
 #PJS Adult Sizes: S-M-L-XL \$18.99

**H Flannel Pants**  
 These flannel pants are the perfect weight for camp. Made from 100% cotton flannel, they feature an outside drawcord waistband. Available in Navy/Light Blue Plaid, Turquoise/Purple Plaid, Light Blue Plaid, Neon Squares, Black/Orange Plaid, Navy/White Plaid, Green/White Plaid, Red/Black Plaid, Black/White Plaid, and Navy/Gold Plaid.  
 #FPL Youth Sizes: S-M-L \$23.99  
 #FPL Adult Sizes: S-M-L-XL \$23.99  
**I** #FPLL Green/White Plaid with Logo \$26.99

**J Traditional Flannel Shorts**  
 100% cotton flannel plaid with outside drawstring. Available in Blue/Green and White/Blue.  
 #FPS Youth Short Sizes: S-M-L \$17.99  
 #FPS Adult Short Sizes: S-M-L-XL \$17.99

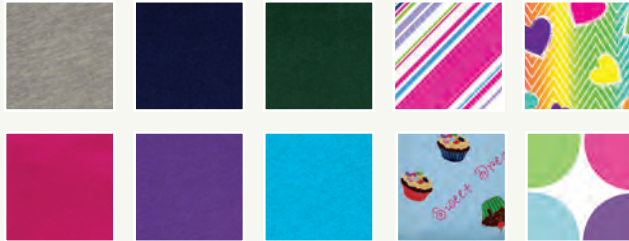


Order by Phone: 973.994.7416

Meet Us In Person - Back Cover



**A**



**A**

### Jersey Knit Sheet Sets

Fitted sheet, flat sheet, and pillow case, made of soft 100% cotton jersey knit. Available in Stripes, Grey, Navy, Dark Green, Stripes, Chevron Hearts, Hot Pink, Purple, Turquoise, Blue Cupcakes, and Dots.

#JKST Three Piece Twin Set \$49.99

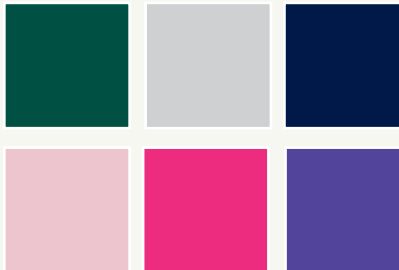
**B**

### Percale Camp Sheets (*not shown*)

Camp sheets and standard sized pillow cases in 50/50 cotton/polyester percale. Set includes one fitted sheet, one flat sheet, and two pillow-cases. Available in Light Blue.

#PSST Percale Twin Sheet Set \$29.99

**C**



**C**

### Plush Fleece Blanket

Super-soft plush fleece blanket. Available in Navy, Green, Grey, Navy, Light Pink, Hot Pink, and Purple.

#28PF Size: 60" x 80" \$45.99

**D**

### Jersey Knit Comforter

100% cotton jersey knit comforters with plush polyester fill. Available in Navy/Grey, Stripe/Turquoise, and Chevron Heart.

#28RC Size: 60" x 80" \$49.99

**D**



**E**

### Hypo-allergenic Pillow

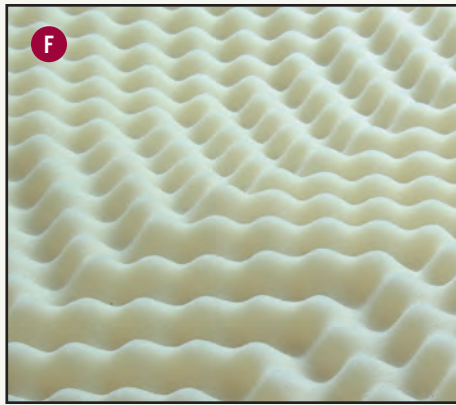
This hypo-allergenic pillow has a 50/50 poly/cotton cover.

#PILLOW 20" x 26" \$14.99





**F Egg Crate Mattress Pad**  
 Durable, lightweight and comfortable high density foam. Comes compression packed for easy packing.  
**#EC** One Size **\$18.99**



**G Mesh Sock Bag**  
 Custom designed for camp. Place your socks and underwear in this mesh oversized zippered bag before sending it to the laundry and never lose a sock again!  
**#SBAG** Size: 18" x 24" **\$6.99**



**H Plastic Shoe Box**  
 Strong durable plastic shoe box. Personalization available.  
**#UBB1** 8" x 13" x 4.75" **\$4.99**  
**#UBB1P** With Personalization **\$11.99**



Personalization Options



**I Oversize Laundry Bags**  
 Oversized 30" x 40" laundry bag, with drawstring closure. Solids available in Maroon, Green, Light Blue, Hot Pink, Purple, Navy, and Tie-Dye. Personalization includes first initial, last name.  
**#LBS** Solid Color **\$7.99**  
**#LBSP** Solid - Personalized **\$15.99**  
**#LBP** Tie Dye **\$17.99**  
**#LBPP** Tie Dye - Personalized **\$25.99**



Order by Phone: 973.994.7416

Meet Us In Person - Back Cover





- A Crazy Creek® Camp Chair**  
Stay dry and comfortable with this portable camp seat with adjustable straps. Comes with Crazy Creek's lifetime warranty. Available in Blue, Tie Dye, and Green.
- |      |                      |         |
|------|----------------------|---------|
| #CC  | Original Chair       | \$44.99 |
| #CCP | With Personalization | \$51.99 |



- B Kelty® Mummy Bag**  
This lightweight and compact 'mummy' style bag is great for the serious camper or for those who need a little extra warmth. It features a two-layer quilt construction with an insulated hood. Comes packed in its own stuff bag and will keep your camper warm to 20°. Available in Blue.
- #SB32 Size: 78" x 31" \$99.99



- C Kelty® Overnighter Sleeping Bag**  
This ultra-comfortable two-layer quilted sleeping bag is perfect for overnights and extended camping trips. Comes complete with stuff bag. Campers will be warm and comfy to 35°. Available in Blue.
- #SB31 Size: 80" x 34" \$69.99



- D Campout Sleeping Bag**  
This lightweight sleeping bag is perfect for campouts and will keep your camper warm to 40°. Comes complete with stuff bag. Available in Red.
- #SB30 Size: 78" x 33" \$39.99

- E Stuff Bag**  
Make packing your sleeping bag easier with a water repellent nylon stuff bag.
- #STUFF Assorted Colors \$12.99



- F Bug Trio**  
All your camper's needs in one kit: Natrapel® insect repellent, Kid's Afterbite®, and 2 Super Band® wristbands. Natrapel® is a DEET free repellent with citronella, aloe vera, and other natural ingredients. Kid's Afterbite® comes in a handy pocket sized vial to soothe bites and stings. Super Band® wristband keeps bugs away up to 200 hours.
- |        |                       |         |
|--------|-----------------------|---------|
| #BUG   | Set of all 3          | \$16.99 |
| #BBAND | 3 Pack of Super Bands | \$8.99  |





All trunks can be monogrammed for \$10.00.

**Soft Trunks**

Our soft trunks are designed exclusively for The Camp Spot and are made from extra heavy duty 1680 denier, coated polyester. They feature a U-shaped opening for easy packing, two pockets for additional storage, a shoulder strap and end grab handles. Available in two sizes, and in Navy, Hot Pink, and Black.

- A Elephant Soft Trunk**  
 #31ET Size: 44" x 20" x 20" \$79.99  
 #31ETE With Monogramming \$89.99
- B Deluxe Soft Trunk**  
 #31ST Size: 36" x 20" x 18" \$64.99  
 #31STE With Monogramming \$74.99
- C Luggage Tag Set**  
 Luggage tags with your camp logo. Custom printed with your camper's name and address.  
 #TAG Set of 3 \$14.99

- D High Sierra® Camp Backpack**  
 Large front load, main compartment with large gusset front pocket and side mesh water bottle pocket. Perfect for trips. Available in Navy.  
 #BP1 Size: 17.25" x 11.25" x 8" \$25.99  
 #BP1P With Monogramming \$32.99
- E Under Armour® Explorer Backpack**  
 This Under Armour backpack features a water repellent finish, padded shoulder straps and back, and 2 side water bottle pockets. Available in Navy, Pink, and Grey. (Grey not shown.)  
 #BPUA Size: 18" x 12" x 8" \$54.99  
 #BPUAP With Monogramming \$61.99



Order by Phone: 973.994.7416

Meet Us In Person - Back Cover

**A Under Armour® Hard Soccer Shin Guards**  
 Durable hard shell, with dimple foam backing for comfort and impact relief. Removable ankle protection.  
**#SHIN** Sizes: M-L **\$26.99**



**B Soccer Socks**  
 Full length moisture wicking athletic socks with cushioned sole. Great for all field sports. Available in Navy, White, Red, Green, and Black.  
**#SOX** Sizes: S-M-L **\$8.99**



**C Shock Doctor® Compression Short with Cup**  
 Moisture wicking compression short with protective cup.  
**#CUP** Youth Sizes: S-M-L **\$36.99**  
**#CUP** Adult Sizes: S-M-L-XL **\$36.99**

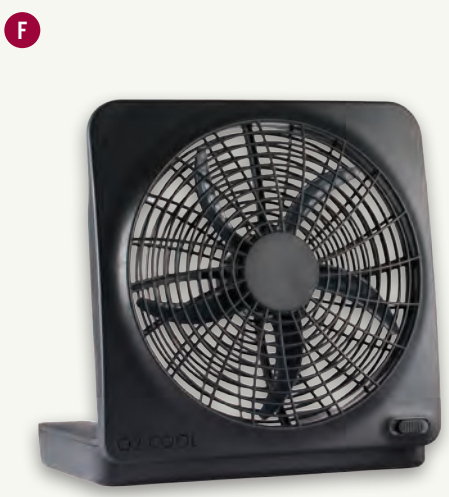


**D Shock Doctor® Pro Mouth Guard**  
 Necessary for all contact sports. This latex free guard has shock absorbing jaw pads that are braces compatible.  
**#MG** Youth (up to age 11) **\$8.99**  
**#MG** Adult (age 11+) **\$8.99**



**E Shock Doctor® Mouth Guard Case**  
 Heavy-duty ventilated case with athletic bag attachment system provides secure, clean storage for your mouth guard.  
**#MGC** One Size **\$7.99**





- A Rugged Flashlight Lantern Combo**  
Our best selling flashlight has been redesigned for 2015. Now it's even tougher and water resistant. Use it as a traditional flashlight or a lantern by sliding out the case. Requires (4) AA batteries not included.  
#FLL Size: 7 inch **\$16.99**
- B LED Flashlight Lantern Combo**  
New for 2015, this deluxe LED flashlight lantern combo is rugged, water resistant, and ultra bright. Use as a flashlight or a lantern after 'lights out'. Features a durable base with extendable feet and a ring for hanging.  
#FLLD Size: 7 inch **\$29.99**
- C Petzl® Head Lamp**  
Fits over your head and leaves your hands free for reading or writing letters after "lights out". Has bright LED light. Requires (3) AAA batteries (included).  
#HL **\$36.99**
- D Nalgene® Water Bottle**  
Stay hydrated with this 24 oz. BPA free bottle with easy one hand opening. Available in Blue, Red, and Green.  
#NAL 24 oz. Bottle **\$9.99**
- E Water Bottle Carrier**  
This insulated water bottle holder is custom designed to fit both the 24 oz. Nalgene® and the 27 oz. Kleen Kanteen® water bottles. Water bottles sold separately. Available in Black.  
#WBC **\$9.99**
- F Battery Operated Fans**  
Foldable 2-speed fans. 10" fan requires (8) D batteries and comes with an AC adaptor. 5" fan requires (2) D batteries. Batteries not included.  
#FAN5 5" Tall **\$14.99**  
#FAN10 10" Tall **\$34.99**
- G 5" Clip Fan**  
Battery operated, light weight clip fan. Fan rotates 360 degrees and has separate wired battery pack. Uses 2-D cell batteries (not included).  
#FANC5 **\$22.99**
- H Squeeze Breeze®**  
Stay cool with this hand-held water misting fan. Extra wide mouth opening for ice. Requires (2) AA batteries not included.  
#SB3 Assorted Colors **\$14.99**

Order by Phone: 973.994.7416

Meet Us In Person - Back Cover



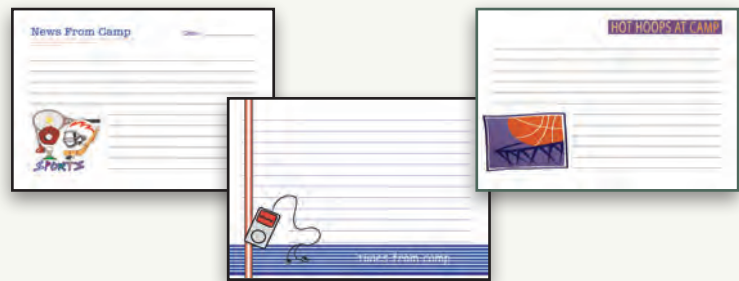
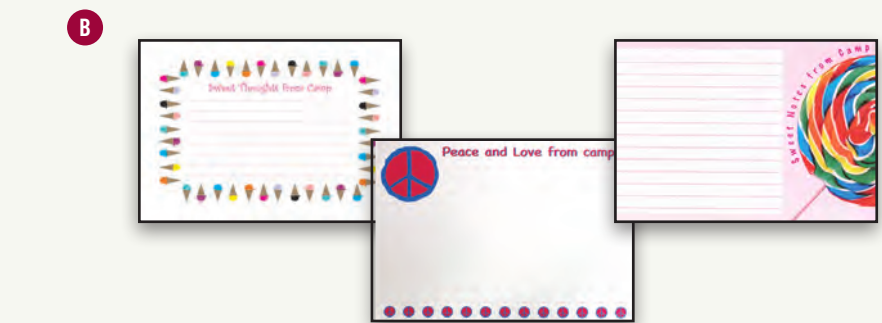
**A Fold and Send Stationery**  
 Write your note, fold and send! Eight notes and stickers per package. Available in Cupcakes, Sprinkles, Ice Cream, Zebra, Sports Graffiti, Baseball (Fill-In), Basketball, Lacrosse, Rock Candy, Dots, Candy Words, and Peace/Love  
**#STF \$9.99**

**B Stationery Cards**  
 This stationery set comes with 15 cards and envelopes. Available in Sweet Thoughts, Peace, Lollipop, Sports, Tunes, and Basketball.  
**#STC \$14.99**

**C Storage Clipboard**  
 Strong, durable, plastic clipcase roomy enough to hold stationery, pens, pencils, stamps and stickers. Available in Blue, Green, Pink and Purple. Personalization Available.  
**#CLIP Size: 10" x 15" \$17.99**  
**#CLIPP Personalized \$24.99**



**Personalization Options**



CHECK OUT OUR WEBSITE FOR MORE STATIONERY



CHECK OUT OUR WEBSITE FOR MORE FUN STUFF



- D Autograph Square Pillows**  
 This fun autograph pillow is 15" x 15". Perfect for keeping camp memories. Comes with a permanent marker. Available in Grey with Camp Logo and Love.

#ASPL	With Camp Logo	\$24.99
#ASP	Love	\$19.99
- F Autograph Heart Pillow**  
 This heart shaped pillow holds your friends' autographs. Comes with a permanent marker.

#APH \$19.99
- G Smiley Hug Autograph Pillow**  
 Collect hugs and autographs with this cheerful pillow. Comes with a permanent marker.

#AHUG \$19.99
- H Bandana**  
 Show your spirit with these classic paisley bandanas made from 100% cotton. Available in Gold, Green, and White. (White not shown.)

#BAND Size: 22" x 22" \$2.99
- I Autograph Sports Balls**  
 These fun shaped sports pillows are perfect for keeping camp memories. Comes with a permanent marker. Available in Basketball, Soccer, and Tennis.

#BALL Size: 8.5" \$19.99
- J Single Use Camera**  
 A picture says a thousand words. Photograph your whole summer. Comes with 27 exposures and a built-in flash.

#CAM \$11.99

Order by Phone: 973.994.7416

Meet Us In Person - Back Cover



# 2015 TRAVEL SCHEDULE

*Schedule Your Appointment Today!*

City	Hotel	Phone	Date	Hours
Livingston NJ	<b>The Camp Spot Showroom</b> 15 Microlab Road	(973) 994-7416 www.thecampspot.com	<b>BY APPOINTMENT ONLY</b>	Call For Hours
Manhattan NY	<b>Millennium Broadway Hotel</b> 145 W. 44th Street <i>LATE DELIVERY AVAILABLE</i> Between Broadway & 6th Ave. Entrance on 44th or 45th St.	(212) 768-4400	Fri 1/30 Sat 1/31 Sun 2/1	3:30pm-6:30pm 10am-5pm 10am-3pm
Tarrytown NY	<b>Westchester Marriott</b> 670 White Plains Rd., Tarrytown	(914) 631-2200	Thu 2/5 & Fri 2/6 Sat 2/7 & Sun 2/8	3:30pm-6:30pm 10am-5pm
Boca Raton FL	<b>Embassy Suites</b> 661 NW 53rd Street	(561) 994-8200	Wed 2/11 & Thu 2/12 Fri 2/13 Sat 2/14 Sun 2/15	3:30pm-6:30pm 11am-6pm 11am-5pm 10am-2pm
King of Prussia PA	<b>Double Tree By Hilton</b> 301 W. DeKalb Pike	(610) 337-1200	Fri 2/20 Sat 2/21 & Sun 2/22	3:30pm-6:30pm 11am-5pm
Manhattan NY	<b>Millennium Broadway Hotel</b> 145 W. 44th Street Between Broadway & 6th Ave. Entrance on 44th or 45th St.	(212) 768-4400	Fri 2/27 Sat 2/28 Sun 3/1 Mon 3/2	3:30pm-6:30pm 10am-5pm 10am-5pm 3:30pm-6:30pm
Tarrytown NY	<b>Westchester Marriott</b> 670 White Plains Rd., Tarrytown	(914) 631-2200	Thu 3/5 & Fri 3/6 Sat 3/7 & Sun 3/8	3:30pm-6:30pm 10am-5pm
Westbury NY	<b>Westbury Holiday Inn</b> 369 Old Country Road	(516) 997-5000	Thurs 3/12 & Fri 3/13 Sat 3/14 & Sun 3/15	3:30pm-6:30pm 10am-5pm
Boston MA	<b>Hampton Inn</b> 319 Speen Street, Natick	(508) 653-5000	Fri 3/20 Sat 3/21 Sun 3/22	3:30pm-6:30pm 10am-5pm 10am-4pm
Stamford CT	<b>Hilton Stamford Hotel</b> 151 Greenwich Avenue	(203) 967-2222	Thurs 3/26 & Fri 3/27 Sat 3/28 & Sun 3/29	3:30pm-6:30pm 11am-5pm
Tarrytown NY	<b>Westchester Marriott</b> 670 White Plains Rd., Tarrytown	(914) 631-2200	Wed 4/1 & Thurs 4/2 Sat 4/4 Sun 4/5	3:30pm-6:30pm 10am-2pm 11am-5pm
Manhattan NY	<b>Millennium Broadway Hotel</b> 145 W. 44th Street Between Broadway & 6th Ave. Entrance on 44th or 45th St.	(212) 768-4400	Thu 4/9 & Fri 4/10 Sat 4/11 Sun 4/12	3:30pm-6:30pm 11am-5pm 11am-5pm
Manhattan NY	<b>Millennium Broadway Hotel</b> 145 W. 44th Street Between Broadway & 6th Ave. Entrance on 44th or 45th St.	(212) 768-4400	Thu 4/16 & Fri 4/17 Sat 4/18 Sun 4/19	3:30pm-6:30pm 11am-5pm 11am-5pm
Rye Brook NY	<b>Hilton Rye Town</b> 699 Westchester Avenue	(914) 939-6300	Wed 4/22 Thu 4/23 & Fri 4/24 Sat 4/25 & Sun 4/26	3:30pm-6:30pm 11am-5pm
Manhattan NY	<b>Millennium Broadway Hotel</b> 145 W. 44th Street Between Broadway & 6th Ave. Entrance on 44th or 45th St.	(212) 768-4400	Thu 4/30 & Fri 5/1 Sat 5/2 Sun 5/3	3:30pm-6:30pm 11am-5pm 11am-5pm

**SCHEDULE YOUR APPOINTMENT TODAY!**

**www.thecampspot.com • 973.994.7416**